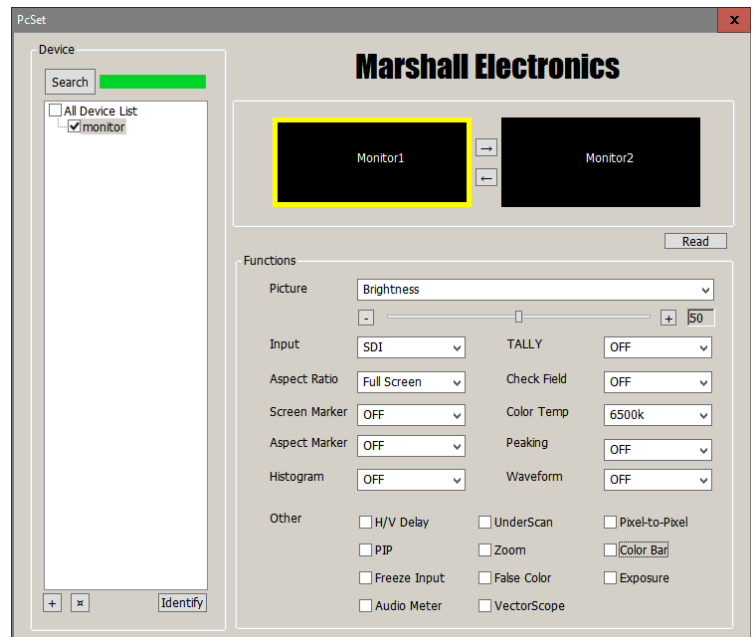


M-LYNX-702W / PC Set Monitor Configuration Application

Overview

PCSet is a convenient software tool for controlling multiple Marshall M-LYNX-702W dual-screen monitors from a single computer. PCSet will run on any Windows-based computer (XP or later) and does not have to be installed. Simply copy the file PCSet.exe to the desktop or some other convenient location, double-click and the control screen will appear.



Connections

The PCSet application connects via an Ethernet connection which can be either directly through a “cross over” cable, through an Ethernet switch or through an Ethernet Router.

Connecting through a Router is typically the easiest method. Check that the monitor Network setting has been selected for “DHCP”. Connect both the monitor and the computer to the network, click the Search button on PCSet and it will find the monitor or monitors on the same network. In the example above, one monitor has been found on the network and a check has been placed in the checkbox to enable control.

When PCSet is unable to find the monitor on the network, it may be because the network is not operating in DHCP mode. In this case, please assign a “fixed” IP address to the monitor using the monitor’s menu settings. Click the “+” Icon in the PCSet application, enter the address of the monitor and click OK.

Basic Controls

Because the M-LYNX-702W has two screens, both screens are found at the same time. The example also shows that the graphic for Monitor 1 has a yellow border around it. Monitor 1 is the Left screen, Monitor 2 is the Right screen. Clicking on the graphic turns the border yellow and takes control of that screen.

Reading and Copying Settings

The READ button accesses the setting in the currently selected screen and sets the PCSet buttons and controls to match. In this way, it is easy to see what the current settings are and to change just what is desired.

When it is desired to use the same settings for both the Left and Right screens, it is only necessary to change the settings for one of the screens then click on one of the arrows located between the Monitor1 and Monitor2 graphics. This will copy all of the settings from one screen to the other.

When multiple M-LYNX-702W monitors are on the same system, it is possible to conveniently copy setups from one screen to other screens on the network. This is done by clicking the small square icon next to the “+” icon. From there, choose Copy to get the setup from the currently selected screen then, click on another screen and select Paste.

Monitor Functions

The functions for Brightness, Input selection, Aspect Ratio, etc. are the same as on the actual monitor. Please refer to the monitor Operations Manual for detailed explanation about these controls and functions.