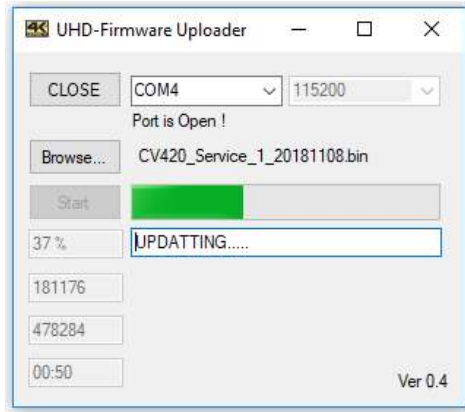


CV420 Firmware Update Instructions

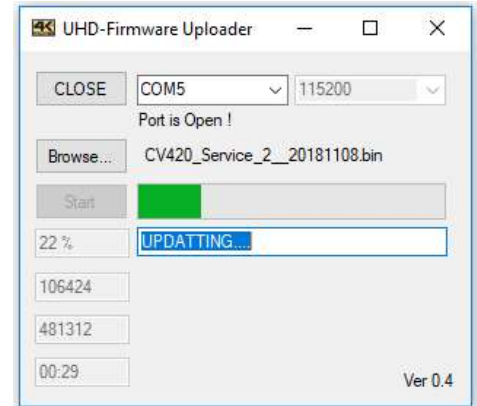
Listed below are detailed instructions on how to upload new firmware to Marshall CV420 cameras.



- Download Folder Files named "CV420 Firmware" from CV420 website page to a local folder on your computer:
 - one (1) setup Application tool (4K_Updater_Marshall_V01_Install)
 - two (2) firmware ".bin" files (CV420_Service_1 & CV420_Service_2)
- Load the firmware Application tool file named "4K_Updater_Marshall_V01_Install(2)"
- Plug in micro USB side (standard USB A-type to micro-USB B) to the **TOP** USB port on rear camera panel identified as Service "1".
- Open the 4K_Updater application tool and select COM port used and push **OPEN**.
- There will be two firmware files to LOAD or UPDATE (Service_1 and Service_2)...done one at a time, done to Service Port #1 then #2.
- Push Browse button in 4K_Updater tool to find and select the bin file named **CV420_Service_1** where you saved firmware ".bin" files.
- Start firmware update by pushing **Start** and firmware will start updating.



- When update is completed it will show **FINISH** below progress line.
- Remove USB micro cable from Service #1 on rear camera panel and insert into Service #2 **BOTTOM** port, **do not unplug camera from power source**.
- Find and select the bin file named **CV420_Service_2** by pushing Browse button again and select **Service_2** file from download.



- Start second (Service 2) firmware update while plugged into Service Port 2 by pushing **Start** to upload firmware.
- When upgrade is done remove the USB cable from camera, and power cycle the camera.
- Please note on the first reboot after firmware update, there will be no images on screen for about 1 minute while it's booting new firmware.
- Leave the camera on for 1 minute in normal operation; after 1 minute then Power cycle again.
- If the firmware update is successful, an image will display onscreen.
- Adjust camera back to preferred resolution from default 1080p.
- Check the firmware version from OSD menu under SETUP > SYSTEM INFO to make sure firmware version is the latest version attempted to upload.
- If you have any questions, please feel free to contact Marshall Camera support at 800-800-6608.