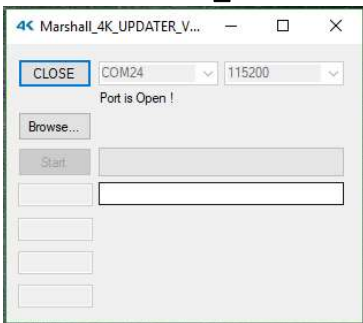


CV420 Firmware Update Instructions

Listed below are detailed instructions on how to upload new firmware to Marshall CV420 cameras using a USB.



1. Completely download and unzip folders and files named "CV420 Firmware" from CV420 website page to a local folder on your computer, you should see the following in the folder:
 - a. one (1) Firmware Updater Application tool (4K_Updater_Marshall_V02_Install)
 - b. two (2) firmware ".bin" files (CV420_Master & CV420_Slave)
2. Load the firmware Application tool file named "4K_Updater_Marshall_V02_Install(2)", and install icon on your desktop for future use. *Don't open program application until all cables are setup (#3)*
3. Plug in micro USB side (standard USB A-type to micro-USB B) to the **TOP** USB port on rear camera panel identified as Service "1" (*cable sold separately*)
4. Open the 4K_Updater application tool and select COM port used and push **OPEN**.
5. There will be two firmware files to LOAD (one CV420_Master used when plugged into Service 1 and one CV420_Slave used when plugged into Service 2 port)...done one at a time to Service Port #1 then #2.
6. Push Browse button in 4K_Updater tool to find and select the bin file named **CV420_Master** where you saved firmware ".bin" files.



7. Start firmware update by pushing **Start** and firmware will start updating.

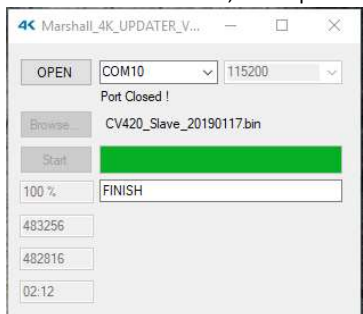
8. When update is completed it will show **FINISH** below progress line.

9. Remove USB micro cable from Service #1 on rear camera panel and insert into Service #2 **BOTTOM** port, *do not unplug camera from power source.*

10. Find and select the bin file named **CV420_Slave** by pushing Browse button again and select **CV420_Slave** file from download.

11. Start second (Service 2) firmware update while plugged into Service Port 2 by pushing **Start** to upload firmware.

12. When upgrade is done (progress will say FINISH) remove the USB cable from camera, and power cycle the camera twice as described below.



13. Please note on the first reboot after firmware update,

there may not be images on screen for about 1 minute while it's booting new firmware, might also be scrambled images.

14. Leave the camera on for 1 minute in normal operation; then after 1-minute Power cycle again.

15. If the firmware update is successful, a clean image will display onscreen.

16. Adjust camera back to preferred resolution from default 1080p30fps.

17. Check the firmware version from OSD menu under SETUP > SYSTEM INFO to make sure firmware version is the latest version attempted to upload.

18. If you have any questions, please feel free to contact Marshall Camera support at 800-800-6608.

