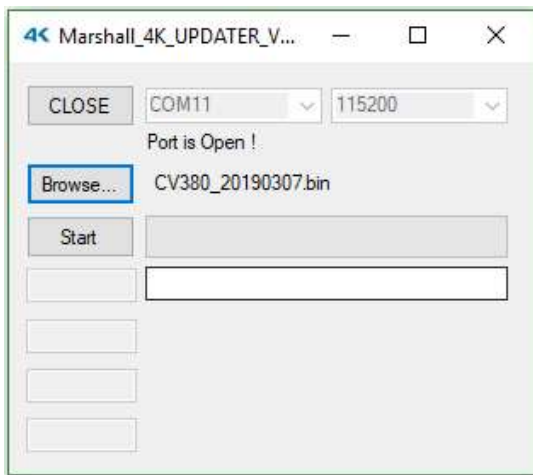


## CV380 Firmware Update Instructions

Listed below are detailed instructions on how to upload new firmware to Marshall **CV380** cameras.



1. Download Folder File named "CV380 Firmware Update" from CV380 website page to a local folder on your computer (includes):
  - a. one (1) setup Application tool (4K\_Updater\_Marshall\_V02\_Install)
  - b. one (1) firmware ".bin" files (CV380\_20190307\_2.bin)
2. Load the firmware Application tool file named "4K\_Updater\_Marshall\_V02\_Install (2)"
3. Plug in micro USB side (standard USB A-type to micro-USB B) to the Service Port on rear panel of CV380.
4. Open the 4K\_Updater application tool and select COM port used and push **OPEN**.
5. Push Browse button in 4K\_Updater tool to find and select the bin file named **CV380\_20190117\_2.bin** where you saved firmware ".bin" files.
6. Start firmware update by pushing **Start** and firmware will start updating.



7. When update is completed it will show **FINISH** below progress line.
8. Remove USB micro cable from Service Port on rear camera
9. Please note on the first reboot after firmware update, there might be no images on screen for about 1 minute while it's booting new firmware.
10. Leave the camera on for 1 minute in normal operation.
11. If the firmware update is successful, an image will display onscreen.
12. Adjust camera back to preferred resolution from default 1080p30fps.
13. Check the firmware version from OSD menu under SETUP >

SYSTEM INFO to make sure firmware version is the latest version attempted to upload.

14. If you have any questions, please feel free to contact Marshall Camera support at 800-800-6608.

