

TECHNOLOGY REPORT

Marshall Electronics, Inc.

1910 East Maple Av, El Segundo, CA 90245 USA

TEL : 310-333-0606

FAX : 310-333-0688

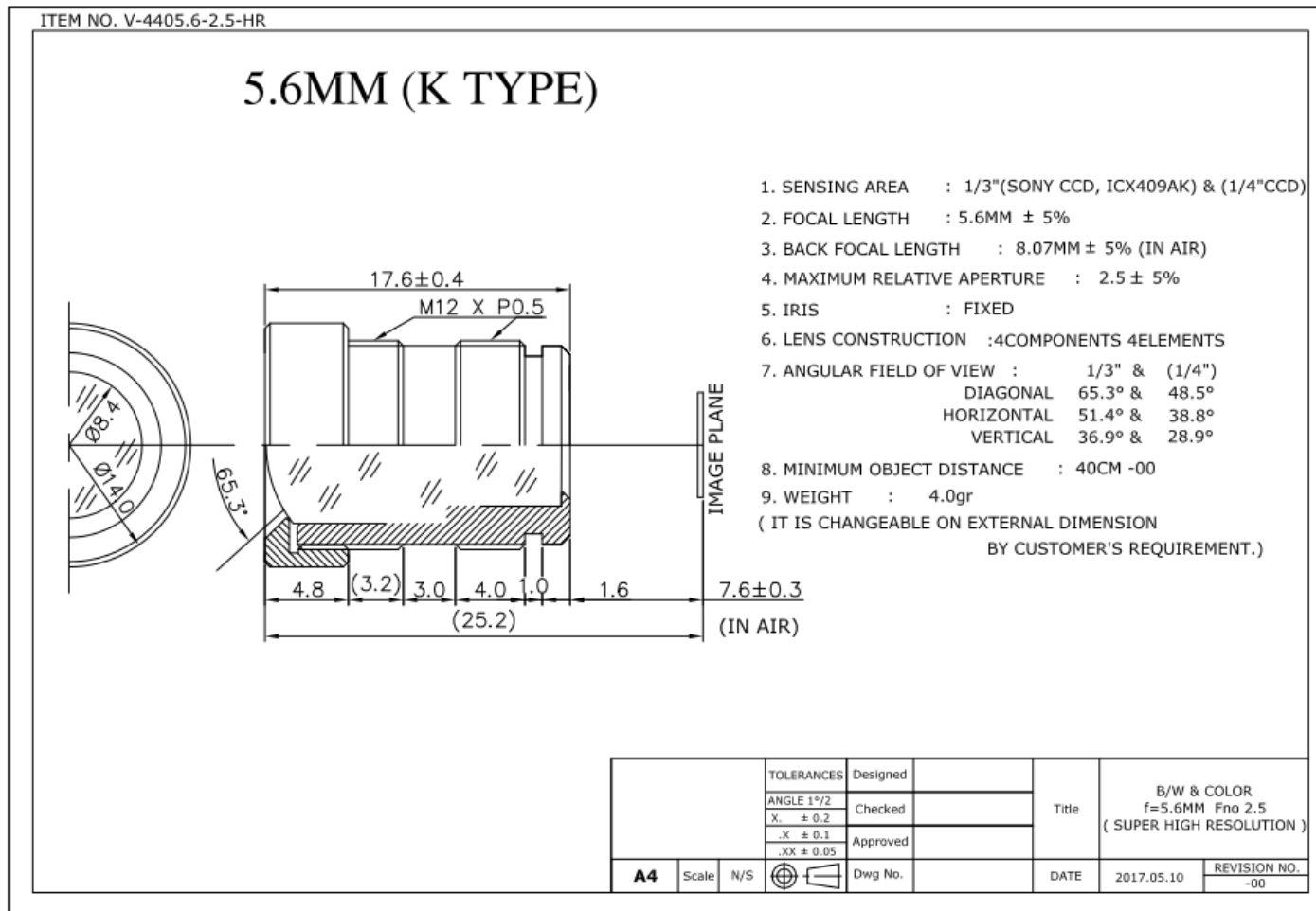
Website: www.mars-cam.com

Email: sales@mars-cam.com

V-4405.6-2.5-HR Lens

5.6mm F2.5 High Resolution CCTV Lens

Specification Data Sheet



TECHNOLOGY REPORT

Marshall Electronics, Inc.

1910 East Maple Av, El Segundo, CA 90245 USA

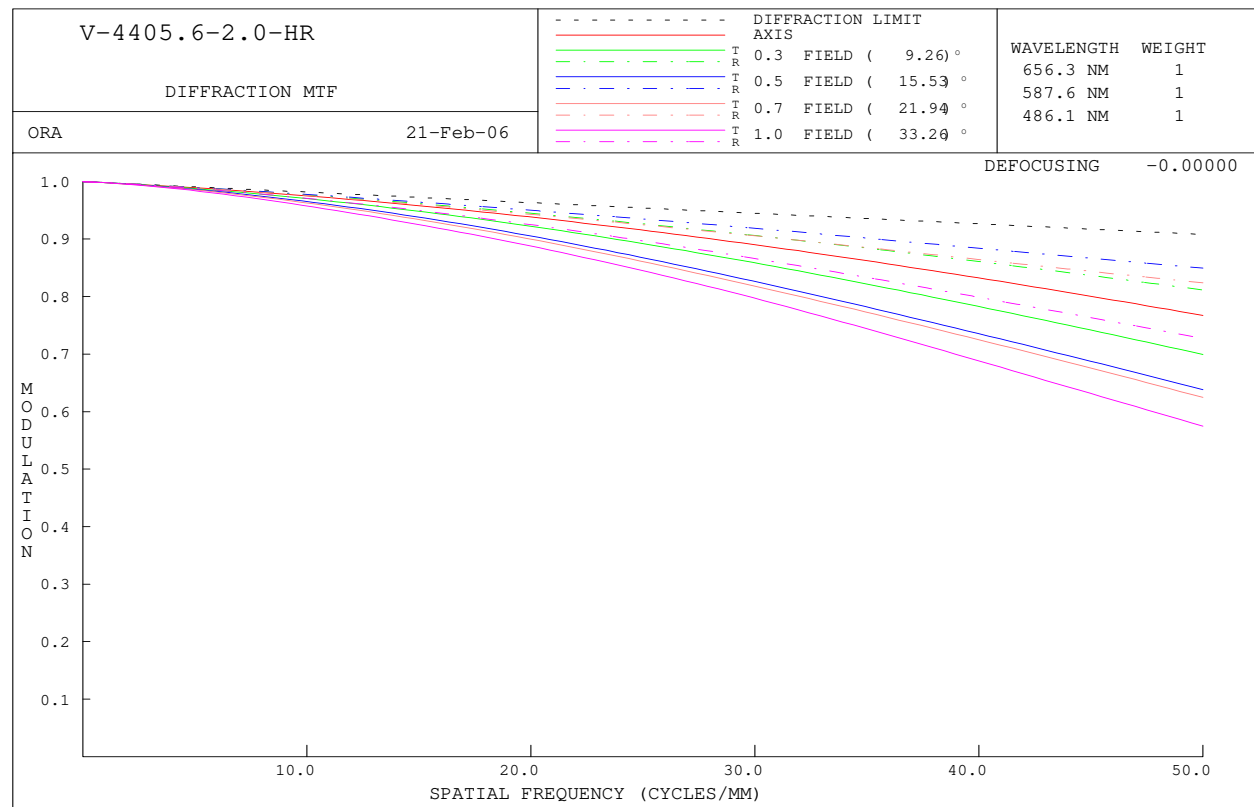
TEL : 310-333-0606

FAX : 310-333-0688

Website: www.mars-cam.com

Email: sales@mars-cam.com

MTF (modulation transfer function)



TECHNOLOGY REPORT

Marshall Electronics, Inc.

1910 East Maple Av, El Segundo, CA 90245 USA

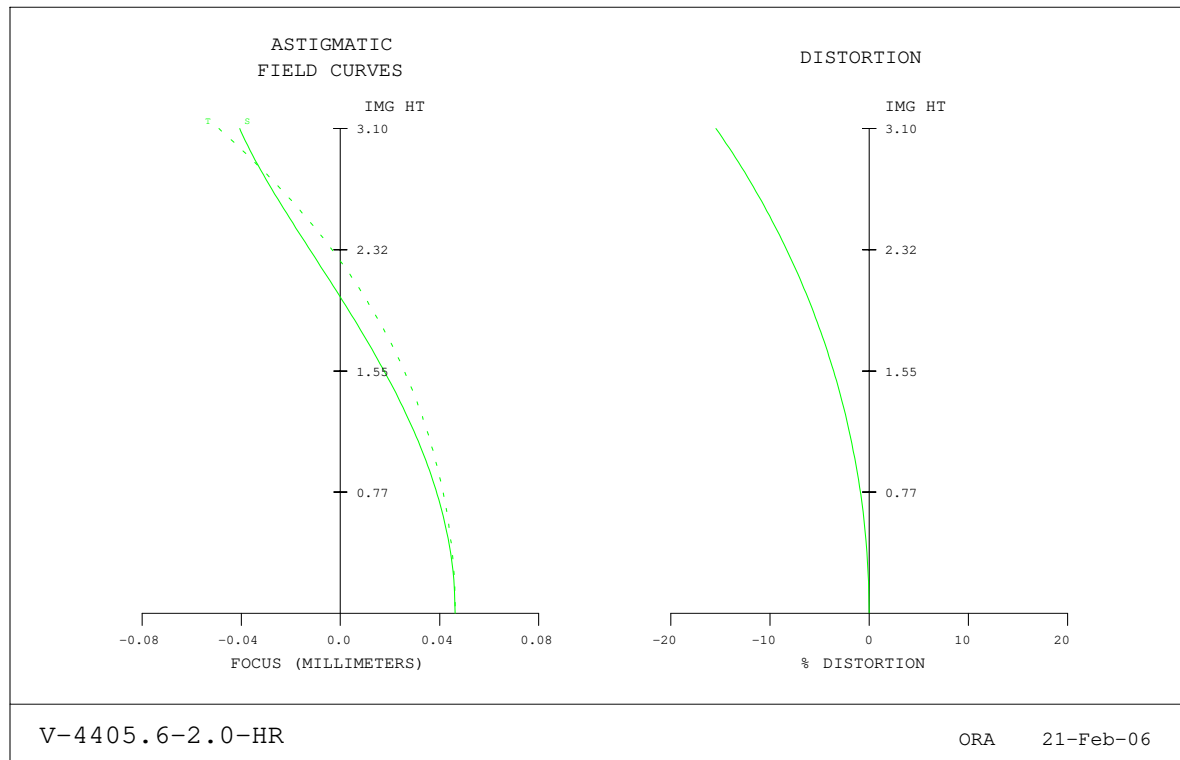
TEL : 310-333-0606

FAX : 310-333-0688

Website: www.mars-cam.com

Email: sales@mars-cam.com

Optical Distortion



V-4405.6-2.5-HR

TECHNOLOGY REPORT

Marshall Electronics, Inc.

1910 East Maple Av, El Segundo, CA 90245 USA

TEL : 310-333-0606

FAX : 310-333-0688

Website: www.mars-cam.com

Email: sales@mars-cam.com

ROTATIONALLY SYMMETRIC FIELD ABERRATIONS

POSITION 1 V-4405.6-2.0-HR

WAVELENGTH 587.6 NM

RELATIVE IMG HT X-FOCUS Y-FOCUS X-FOCUS Y-FOCUS DISTORTION

FIELD HEIGHT AT THE IMAGE SURFACE (DISPLACED BY 0.000000) (PER CENT)

0.00	0.00	0.046293	0.046293	0.046293	0.046293	0.00000
0.10	0.31	0.045073	0.045515	0.045073	0.045515	-0.14114
0.20	0.62	0.041449	0.043160	0.041449	0.043160	-0.56593
0.30	0.93	0.035528	0.039159	0.035528	0.039159	-1.27851
0.40	1.24	0.027496	0.033399	0.027496	0.033399	-2.28599
0.50	1.55	0.017625	0.025717	0.017625	0.025717	-3.59888
0.60	1.86	0.006293	0.015907	0.006293	0.015907	-5.23164
0.70	2.17	-0.005998	0.003730	-0.005998	0.003730	-7.20358
0.80	2.48	-0.018577	-0.011061	-0.018577	-0.011061	-9.54020
0.90	2.79	-0.030537	-0.028652	-0.030537	-0.028652	-12.27517
1.00	3.10	-0.040630	-0.049016	-0.040630	-0.049016	-15.45337

Units of focus are MILLIMETERS