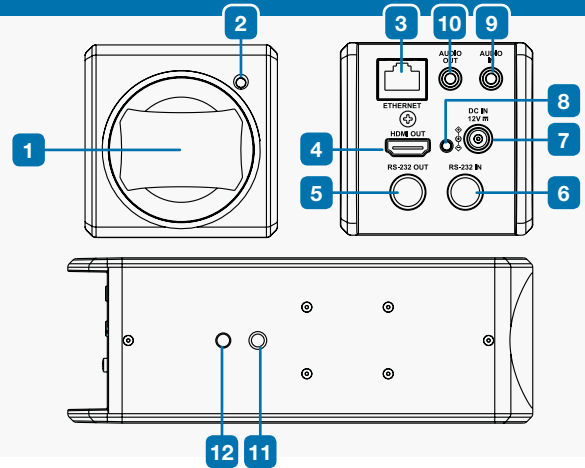


Product Introduction

- | | |
|---|--------------------------------------|
| 1. Lens | 7. DC12V Power Connector |
| 2. Tally Indicator Light | 8. Power Indicator Light |
| 3. Network port (IEEE 802.3af PoE power supply support) | 9. Audio Input (TRS) |
| 4. HDMI Output | 10. Audio Output (TRS) |
| 5. RS232 Output | 11. Tripod Screw Holes (1/4", 20UNC) |
| 6. RS232 Input | 12. Tripod Socket |



Important

Power Supply

1. Please use the accessory DC12V Power adapter for power supply
2. Use a router or hub (IEEE 802.3 af) that supports power over Ethernet (POE)

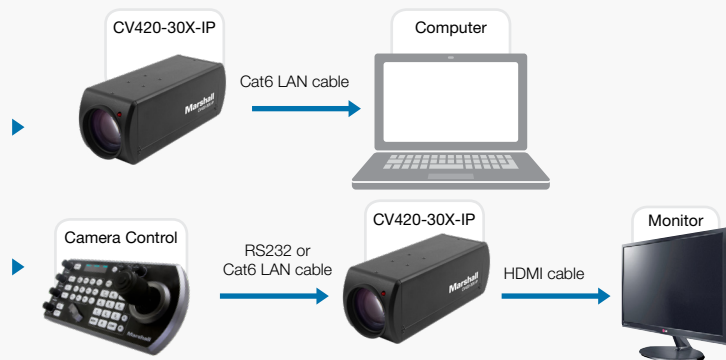
HDMI Output

The factory resolution of CV420-30X-IP is set to 4K. Please make sure that the connected display device supports 4K resolution to view video output

Setup Instructions

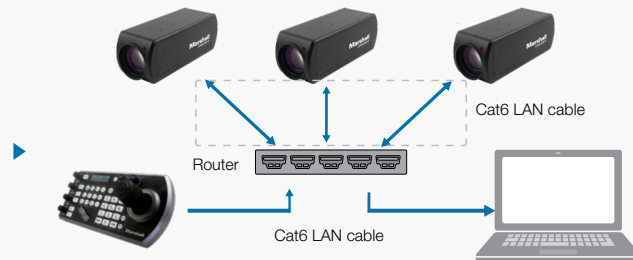
Connecting a Single Camera

1. IP output: use the network cables to connect to the computer; output video through IP; and control the CV420-30X-IP
2. HDMI output: Use HDMI to connect to the screen for video output; and use the VS-PTC-IP control keyboard to control the CV420-30X-IP through RS232 or IP



Connecting Multiple Cameras

To connect multiple units of CV420-30X-IP, the control keyboard, and the computer to the same router; use the VS-PTC-IP control keyboard to control CV420-30X-IP through IP; and use the computer to view video output



Operating Instructions

1. Open the browser, and enter the URL of CV420-30X-IP in the address bar. Default IP address: 192.168.100.100
2. Input the administrator account and password to view video output and to control the camera
3. Default Settings
Account: *admin*
Password: 9999